

Sustainable Forestry Helps Fight Climate Change

Sustainable Forest Management

Ontario's public forests are managed in a sustainable manner under the Crown Forest Sustainability Act. This ensures long-term forest health and provides a wide range of environmental, economic, and social benefits for communities across the province.

The legislation, and the associated policy framework, help protect the environment and biodiversity of Ontario's managed forests and ensure that harvested wood is sustainable and renewable. In other words, laws are in place to ensure our forests continue to renew so that they remain healthy for many years to come.

Ontario's **Crown Forest Sustainability Act** ensures all forest values are considered during forestry planning and operations.



What is a Forest Management Plan?

Forest Management Plans are prepared by a Registered Professional Forester (RPF) with assistance from an interdisciplinary planning team and a Local Citizens' Committee. They are approved for each management unit for a 10-year period. Several consultation opportunities

Sustainably managed forests and wood products **lock up carbon.**



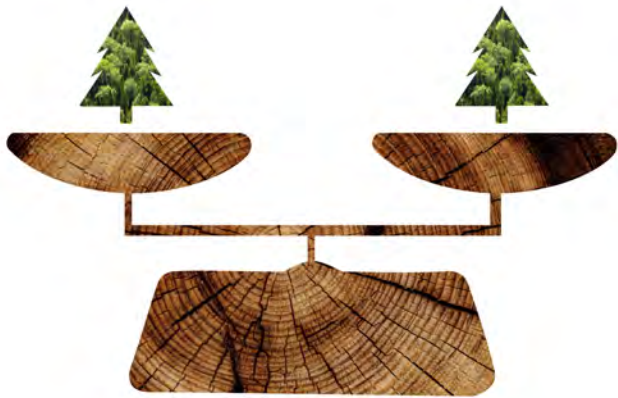
are also provided during the planning process so that the public, Indigenous communities, and stakeholders can engage in how and where the forest is managed. Each plan outlines the long-term objectives for the management unit, and what forest operations will be completed during the 10-year period.

Forest information and models help planning teams depict the current state of the forest, and how it will be managed through time. The plans also identify harvest areas, where roads will be built, and how the forest will regenerate. All forest uses and values are considered to balance social, economic, and environmental objectives.

Forest management principles are used during planning to maintain a diversity of forest types and ages on the landscape to emulate natural forest conditions. During the planning process, ecological forest management guides are used to conserve biodiversity including species at risk. The guides safeguard habitat features such as bird nests,

dens, species at risk, and minimize adverse effects on plant and animal life, water, soil and air. Additionally, on private land there are strong incentive programs for landowners that help to encourage responsible forest management. This includes the Government of Ontario's Managed Forest Tax Incentive Program.

Sustainable forestry balances the **economy** & the **environment**.



How do we ensure forests are sustainably managed?

Law requires that all Forest Management Plans, and operations on every forest management unit, are closely monitored and regularly audited for compliance. Ontario is a world-leader in third-party forest certification and over 75% of Ontario's

public forests are certified to internationally recognized standards for Sustainable Forest Management practices. This voluntary commitment to forest certification serves as independent verification that Ontario's forests are sustainably managed.

Forest Carbon and Climate Change

Sustainable forest management maintains healthy and diverse forests that can withstand the impacts and reduce the effects of climate change. Forests provide a climate solution by capturing carbon in growing trees and storing carbon in forest products. Trees store carbon in the form of wood. When trees are harvested, carbon remains stored in the wood.

Did you know?

Ontario's managed forests store an estimated 7.2 billion tonnes of carbon, and the wood products from these forests store about 25.5 million tonnes of carbon. This is comparable to the annual emissions from about 28.6 million passenger vehicles.¹

Sources:

- Ontario Ministry of Northern Development, Mines, Natural Resources and Forestry, 2021. State of Ontario's Natural Resources – Forests 2021. Queen's Printer for Ontario. Sault Ste. Marie, ON.
- Ministry of Natural Resources and Forestry, Sustainable Growth: Ontario's Forest Sector Strategy, 2020. Queen's Printer for Ontario. Sault Ste. Marie, ON.

Managed Forest Area - in blue

Management Units - in blue



Forest Management Area

Located on public land, Ontario's Managed Forest Area includes part of the **Boreal** forest region and the **Great Lakes St. Lawrence** forest region. This area is divided into Management Units that range in size as shown on the maps in blue. Each unit has a Forest Management Plan that all decisions regarding forest management or forest practices must comply with.